



TL-3100V  
DUAL Recordable Voice  
Magnet Chair Pull-String  
or Bed Pad Fall Monitor

Works with most existing nurse call systems

- Recordable voice option
- Adjustable volume
- Mounts easily to bed or chair
- Easily moves from wheelchair to bed
- Works as magnet pull string or sensor pad/floor mat monitor(not simultaneously)

TL-3100V 11-14-19

Tested and approved to IEC 60601-1-2 Medical Devices

CE

Quieter Fall Prevention™  
Anti-Wandering Solutions™

## Installation and Use Instructions

### TL-3100V DUAL Recordable Voice Magnet Chair Pull-String or Sensor Pad Fall Monitor

**IMPORTANT INFORMATION:** Systems and devices are intended as an adjunct to good caregiving practices and are not a substitute for proper staffing and patient management practices. We recommend that all caregivers receive periodic training in the operation of these systems and that the devices are tested daily. It is important to read and follow the directions.

**Read the instructions and Legal Disclaimer.**

The Smart Caregiver Corporation devices are designed to be installed by the end user. As such, it is the entire responsibility of the buyer to insure that the system is properly installed and tested. Further, the system is not designed to replace good caregiving practices including, but not limited to:

- A.) Direct patient supervision
- B.) Adequate training for staff personnel for fall prevention and elopement
- C.) Testing of the system before each use

**WARNING:** The manufacturer does not claim that this device will stop elopement and/or stop falls. This device is designed to augment caregivers' comprehensive resident mobility management program. Failure to comply with the warning may result in injury or death. This device is not suitable for all individuals. Other devices may be required. This device is not a substitute for visual monitoring by a caregiver.

Where permissible, it is the seller's intent to limit any liability for special, consequential or incidental economic damages to refund of the purchase price or replacement of the goods. Seller disclaims any liability for compensatory or other damages arising out of the use of the goods.

Limited Warranty: Seller warrants that the goods sold will be free from defects of workmanship and manufacturing, for a warranty period from the date of sale. Other than this limited warranty, seller makes no express or implied warranties. Except for this limited warranty. No express or implied warranties are given and no affirmation of seller, by words or action will constitute a warranty. The goods being purchased are being sold on a "with all faults" basis. The entire risk as to the quality and performance of the goods is with the buyer. Should the goods prove defective following their purchase, the buyer, and not the manufacturer, distributor or retailer, assumes the entire cost of all necessary installation, servicing or repairs.

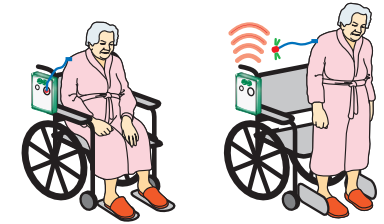
## Chair Pull String

### WHEELCHAIR PLACEMENT

- Mount monitor on chair.
- Place the monitor out of reach of the resident. Suitable mounting locations include: the back or handle of the wheelchair. Make sure the resident cannot tamper with the monitor.

### TEST THE SYSTEM

- Remove magnet from front of monitor.
- The alert will sound. Place magnet back on front of the monitor to silence the alert.



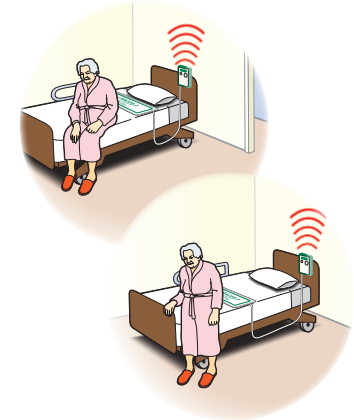
## Bed Sensor Pads

### BED PAD PLACEMENT

- Place the pad under the resident's shoulders to be alerted when the resident sits up in the bed.
- Place the pad under the resident's lower back/buttocks to be alerted when the resident vacates the bed.
- Place the monitor out of reach of the resident. Suitable mounting locations include: the back of headboard, the wall or under the bed. Make sure the resident cannot tamper with the monitor.

### TEST THE SYSTEM

- Plug the pad into the monitor and apply pressure to the pad to activate the system. The monitor will beep twice when active.
- The alert will sound when pressure is released from the pad. Press the "Reset" button on the front of the monitor to silence the alert.



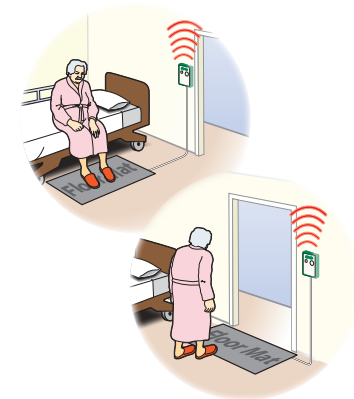
## Floor Mats

### FLOOR MAT PLACEMENT

- Place the Floor Mat in the desired location such as a critical doorway or next to a bed.
- Place the monitor out of the reach of the resident.

### TEST THE SYSTEM

- Step on the Floor Mat to set off the alert. The monitor is now active. The system will sound any time weight is on the Floor Mat.
- When the system is activated, press the "Reset" button on front of the monitor to silence the alert.



Environment conditions of transport and storage between uses:

Temperature: -25°C to +70°C;

Humidity: < 93% RH non-condensing

Environment operating conditions:

Temperature: 5°C to +40°C;

Humidity: 15% to 93% RH non-condensing

Pressure : 700hPa to 1060hPa

### STANDARDIZED SYMBOLS

CE CE marking concerning medical appliances.

Caution: Read the instructions for use.

Follow the user manual instructions.

IP22 Protected against the ingress of foreign object ≥12.5mm & against dripping water when tilted up to 15°.

Please contribute to protect the environment by observing the disposal instructions.

Device in contact with the patient, excluding the heart area.

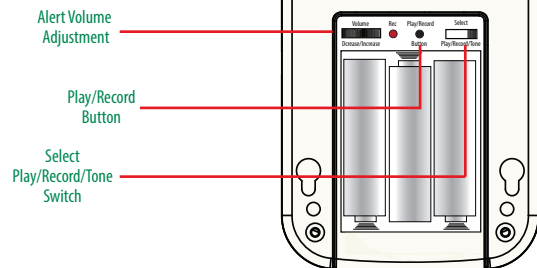
**Need Set-up Help? (800) 650-3637**

# Quick Start Instructions

Need Set-up Help? (800) 650-3637

## 1 Install 3 AA Batteries

The battery compartment door is secured with the included Phillips-head screw



## 2 Recordable Voice or Tone Function

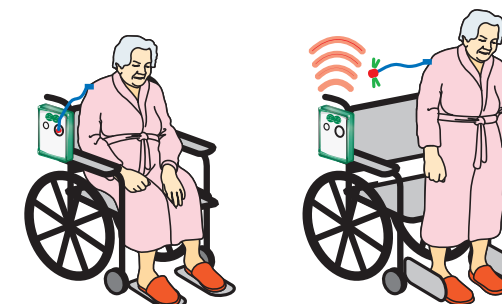
The recordable voice function allows you to record a personal message or song rather than using the standard alarm tone used on other monitors. **\*If you choose to use your own recording, it will take the place of the default recording that originally came on the monitor.**

1. Move the "Select Play/Record Switch" to the record position
2. Hold the "Play/Record Button" to record your message. You have 15 seconds of record time.
3. After completing your recording, move the "Select Play/Record Switch" to the play position.
4. Close battery door and secure it with the small Philips-head screw included.
5. Place monitor back into its plastic protective boot.

## 3 Pull-String Operation For Chair Use

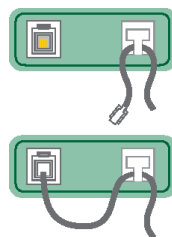
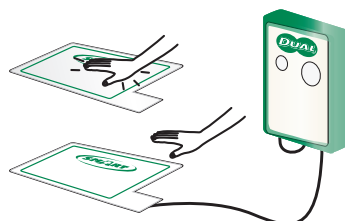
1. Place orange magnet on front of monitor
2. Mount monitor to chair
3. Attach garmet clip to residents clothing

**\*Pull-string function not recommended for bed use. Chair use only.**



## 4 Sensor Pad/Floor Mat Operation

1. Mount monitor to bed or wall
2. Pinch and loop cord and place through the strain relief tab on bottom of monitor
3. Connect pad to monitor
4. Test system



**Note:** Monitor can also be used with a chair sensor pad if desired.

**\*When using as a sensor pad monitor, the pull-string function becomes disabled. Both functions cannot be used at the same time.**

## Troubleshooting

- Check the power supply. If you are using battery power, install a new battery. Or, if you are using an AC adapter, make sure the adapter is plugged into a power outlet.
- Make sure that the sensor pad is plugged into the fall monitor.
- Check monitor switches:
  - Check that the volume switch in the battery compartment is set correctly
- If the steps above do not resolve your problem, call your distributor to troubleshoot.
- Make sure both the sensor pad and the fall monitor are with you at the time of the call.

## Maintenance and Cleaning

- To reduce the spread of infection, it is recommended to Clean this Monitor before deferent patient use.
- Clean this Monitor with disinfectant wipes or anti-bacterial cleaners.

## EMC

Comply with IEC 60601-1-2

## Upgrade with an Adapter (433-NCA)

With the 433-NCA Adapter, your new monitor is able to send a signal directly to a 433-CMU Central Monitor.

