

433-EC 03-04-20

Tested and approved  
to IEC 60601-1-2  
General

CE

Anti-Wandering Solutions™  
**SMART**  
Quieter Fall Prevention™



**433-EC**  
**CordLess Caregiver**  
**Alert Monitor**

- On/Off Switch
- Adjustable Volume
- Works with Multiple Sensor Devices
- Cord Free

**Installation and Use Instructions**

## 433-EC CordLess Caregiver Alert Monitor

**IMPORTANT INFORMATION:** Cordless and Wireless Systems rely on wireless technology which is subject to physical and environmental considerations. Please be aware that the transmitter will not be 100% accurate if it is out of range at any time. It is the end-user's responsibility to make sure that the product is used correctly and within range of each other. Cordless and wireless systems and devices are intended as an adjunct to good caregiving practices and are not a substitute for proper staffing and patient management practices. We recommend that all caregivers receive periodic training in the operation of these systems and that the devices are tested daily. It is important to read and follow the directions.

Read the instructions and Legal Disclaimer.

The Smart Caregiver Corporation devices are designed to be installed by the end user. As such, it is the entire responsibility of the buyer to insure that the system is properly installed and tested. Further, the system is not designed to replace good caregiving practices including, but not limited to:

- A.) Direct patient supervision
- B.) Adequate training for staff personnel for fall prevention and elopement
- C.) Testing of the system before each use

**WARNING:** The manufacturer does not claim that this device will stop elopement and/or stop falls. This device is designed to augment caregivers' comprehensive resident mobility management program. Failure to comply with the warning may result in injury or death. This device is not suitable for all individuals. Other devices may be required. This device is not a substitute for visual monitoring by a caregiver.

Where permissible, it is the seller's intent to limit any liability for special, consequential or incidental economic damages to refund of the purchase price or replacement of the goods. Seller disclaims any liability for compensatory or other damages arising out of the use of the goods.

**Limited Warranty:** Seller warrants that the goods sold will be free from defects of workmanship and manufacturing, for a warranty period from the date of sale. Other than this limited warranty, seller makes no express or implied warranties. Except for this limited warranty. No express or implied warranties are given and no affirmation of seller, by words or action will constitute a warranty. The goods being purchased are being sold on a "with all faults" basis. The entire risk as to the quality and performance of the goods is with the buyer. Should the goods prove defective following their purchase, the buyer, and not the manufacturer, distributor or retailer, assumes the entire cost of all necessary installation, servicing or repairs.



### SMART CAREGIVER CORPORATION

1229 North McDowell Blvd., Petaluma, CA 94954 | Tel: 800-650-3637  
csr@smartcaregiver.com | www.smartcaregiver.com

## 433-EC CordLess Caregiver Alert Monitor



**Also works with:**



Nurse Call  
Buttons



Motion  
Sensors



CordLess  
Floor Mats



CordLess  
Bed Pads



CordLess  
Chair Pads

## About The 433-EC CordLess Caregiver Alert Monitor:

The Smart 433-EC Economy CordLess Monitor is wireless and receives a signal from numerous wireless components (sold separately) such as motion sensors, fall monitors, bed and chair sensor pads, floor mats and nurse call buttons.

### 433-EC CONTENTS:

- 433-EC Economy CordLess Monitor
- 2 Mounting Screws

### 433-EC OPTIONAL ACCESSORIES:

- 433-NC Nurse Call Button
- 433-RB Reset Button
- 433-MS Motion Sensor
- 433-EXT Window / Door Exit Alarm
- CordLess Bed and Chair Sensor Pads
- CordLess Floor Mats
- AC Adapter (AC-04)

**IMPORTANT INFORMATION:** Smart CordLess products utilize wireless technology which is subject to physical and environmental considerations. **THESE PRODUCTS MUST BE TESTED BY THE END USER BEFORE EACH USE IN THE SETTING IN WHICH THEY ARE TO BE USED.** Please be aware that the transmitter will not be 100% accurate if it is out of range at any time. Wireless systems and monitors are intended as an adjunct to good caregiving practices and are not a substitute for proper staffing and patient management practices. We recommend that all personnel receive periodic training in the operation of these systems and that the systems are tested before each use.

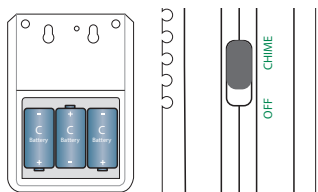
**Need Set-up Help? (800) 650-3637**

# Setting Up A Pre-Programmed System

# CordLess Alarm (433-EC)

## Step 1

- **Insert 3-C batteries into the monitor.**  
*Re-Chargeable Batteries NOT Recommended*
- **Turn switch to Chime position.**



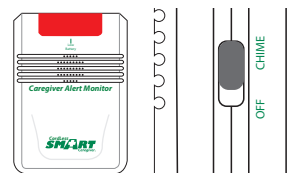
## Step 2

- **Press and hold pressure on pad for 30 seconds and then release to fully initialize your pad.**



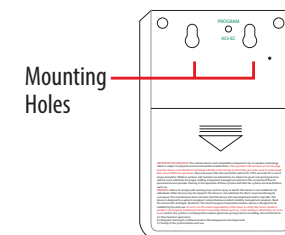
## Step 3

- **When pressure is released, the alarm will sound.**
- **To reset monitor, turn switch to the OFF position and then back to Chime.**



## Mounting Instructions

- **May be mounted on a wall up to 300 ft. away using provided mounting screws.**

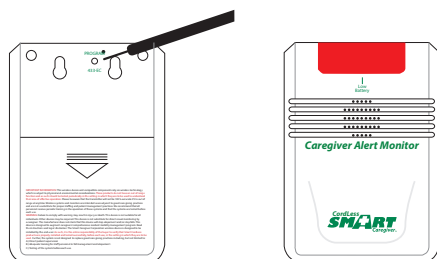


# Adding/Programming New Components To An Existing System

## 1 See Step 1 Above

## 2 Program Your Components

- A. ENTER PROGRAMMING MODE:** Use a paperclip or a pointed tool to press and hold the "Program" button within the hole on the back of the monitor, located under "Program". When the outer two LED Lights on the front of the monitor are solid, release pressure on the button. The lights will remain on to indicate that the monitor is in programming mode.



### B. PROGRAM DESIRED COMPONENTS:

**\*Have components ready before starting**

**Nurse Call Button (433-NC) or Reset Button (433-RB):**  
Press and release the Call/Reset Button.

**Motion Sensor (433-MS):** Turn the motion sensor on. Pass hand in front of motion sensor.

**Window/Door Exit Sensor (433-EXT):** Touch the two parts of the Exit Monitor together; then separate.

**CordLess Sensor Pads:** The transmitter must already be connected to a sensor pad and turned on. Place pressure on the sensor pad and then release.

**CordLess Floor Mats:** Locate the connected transmitter in the side pocket & turn it on. Place pressure on the sensor mat and then release.

**Maximum Range: Up to 300 feet. Read Important Information on back panel of this document.**

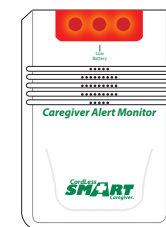
**\*If programming multiple components, repeat step 2b above until all components have been programmed & continue to step 2c to exit programming.**

- C. EXIT PROGRAMMING MODE:** Once the programming is complete, press and release the program button on the back of the monitor. The outer two LED lights will blink to confirm programming and turn off.



## 3 <sup>\*IMPORTANT</sup> Test the System

Test all components before use. The outer LED lights will flash and the chime tone will sound on the 433-EC to indicate that an alert has been triggered.



Center LED light flashes when battery is low.

The 2 outer lights flash when an alert is triggered

433-EC

### TO CLEAR ALL PROGRAMMING

Press and hold the "Program" button until the LED lights on the front are blinking. Release. Programming is now cleared. Return to Program.

